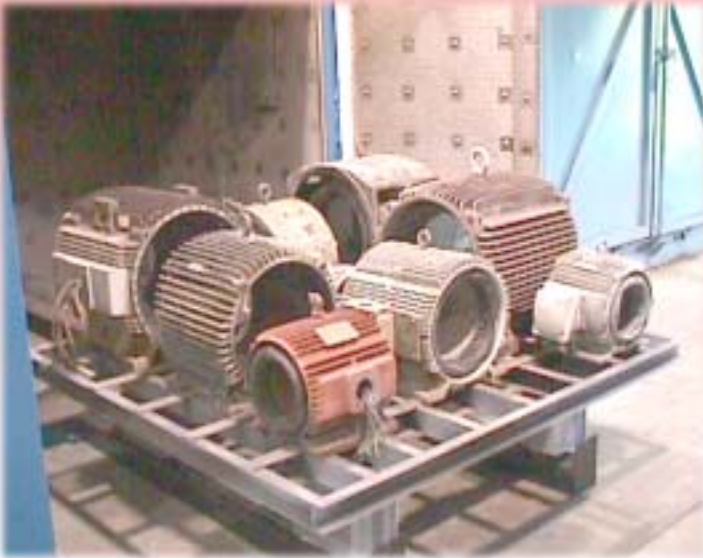


BURN OFF OVENS

OPTIONAL ACCESSORY - ITEM OA-808 FAST TURNAROUND KIT

Supplied with the required electronics, controls and two thermocouples for insertion in the core of a small and large stator. The thermocouples register the stator core temperatures on digital controls with setpoints. When the core temperature exceeds the setpoint, the water suppression system is activated and/or the main burner goes to low fire.



A recent installation by a large EASA shop demonstrates the considerable savings in time and energy. A full load of stators (10 H.P. to 200 H.P.) was stripped in 4.75 hours. All copper was easily removed and the core temperatures never exceeded the core setpoint, i.e. 730°F (388°C). Compare to this customer's previous experience of a 36 hour cycle for the same load in their old oven.

Load Weight: 1,400 Lbs.

Fuel Cost with Item OA-808

Model 260-RT Oven (Interior Dimensions 72"W x 72"D x 69"H over cart) uses 750,000 BTU/HR
 $750,000 \times 4.75 \text{ Hours} = 3,562,500 \text{ BTU/load}$
 Natural Gas is \$8.00 per 1,000,000 BTU
 $3.562 \text{ MBTU} \times \$8.00/\text{MBTU} = \$28.50 \text{ per load}$

Fuel Cost with Old Burn Off Oven

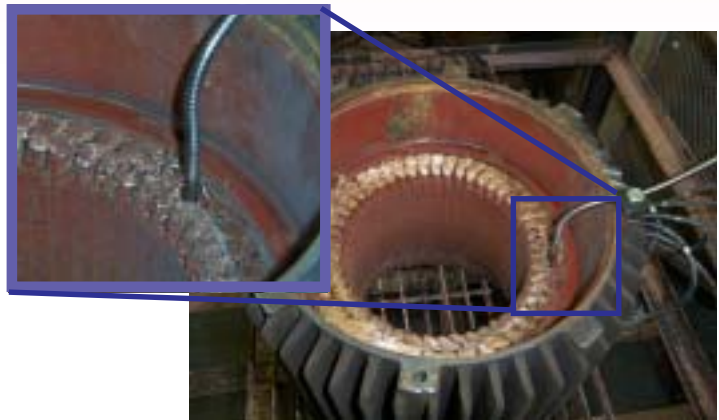
Old Oven used 750,000 BTU/HR
 $750,000 \times 36 \text{ Hours} = 27,000,000 \text{ BTU/load}$
 Natural Gas is \$8.00 per 1,000,000 BTU
 $27 \text{ MBTU} \times \$8.00 = \$216.00/\text{load}$

Fuel Savings per Load

$\$216.00 - \$28.50 = \$187.50/\text{load}$

Fuel Savings per Year

200 Loads x \$187.50/Load =
\$37,500/Year Savings



Flexible Thermocouple inserted into the coils monitors core temperature while the Ramp and Soak Controller provides exact temperature profile.

ace

See reverse for actual test data 

Actual Test Data -6 Stators

Stator Statistics						
				Weight		
Make	HP	RPM	Frame	Before	After	
Baldor	60 HP	3520	326TS	245	233.5	
Baldor	40 HP	1760	324T	265	260	
Baldor	15 HP	3450	254TC	126	121	
US Elec.	40 HP	1775	324T	257	253	
Elektrik	25 HP	3530	284T	236	233	
Lincoln	7.5 HP	1745	213TC Aluminum	50	46	
			Total	1179	1146.5	
				2.75% Combustibles		

Model 260-RT with OA-808 Fast Turnaround Kit using Factory Program 1

Testing 6 stators

	Time	Oven	Seg. #	Front T/C (in stator)	Rear T/C (in stator)	AB Temp
Start	10:00	68°F	6	70°F	70°F	78°F
	10:15	503°F	6	140°F	143°F	1324°F
Hold	10:30	625°F	7	237°F	223°F	1429°F
	10:45	717°F	7	356°F	320°F	1503°F
	11:00	800°F	7	490°F	432°F	1515°F
Down	11:14	890°F	8	609°F	547°F	1517°F
	11:30	750°F	9	762°F	622°F	1521°F
	11:50	748°F	9	805°F	677°F	1522°F
	12:00	750°F	9	802°F	687°F	1521°F
	12:15	751°F	9	798°F	702°F	1523°F
Hold	12:30	750°F	10	795°F	717°F	1521°F
	12:50	747°F	10	782°F	726°F	1522°F
	1:00	748°F	11	779°F	731°F	1517°F
	1:15	750°F	11	775°F	737°F	1515°F
	1:30	751°F	11	770°F	745°F	1512°F
	1:45	749°F	11	768°F	747°F	1507°F
Off	1:55	750°F	11	767°F	751°F	1501°F

The OA-808 System automatically timed out the Model 260-RT in 4 hours with all stators completely burned out.